



BETHLEHEM
UNIVERSITY

جامعة بيت لحم

Partnership solicitation

In June 2014, the **Palestine Institute for Biodiversity and Sustainability (PIBS)** at **Bethlehem** University was initiated by a generous donation from Prof. and Mrs. Mazin Qumsiyeh, other local donors, and via mostly volunteer efforts. Our **Motto**: Respect – first for ourselves, then for others, then for the environment. **Vision**: Sustainable human and natural communities. **Mission**: Research, educate about, and conserve our natural world, culture and heritage and promote responsible human interactions with our environment. **Goals**: 1) Research and knowledge dissemination on the fauna, flora, and human ethnography of the region (Western Asia and North Africa). 2) bridge science-policy-practice gaps to promote sustainable communities, focusing on marginalized communities.

The institute developed quickly and now includes a Museum of Natural History (PMNH), an Ethnography Exhibit (cultural heritage), a Botanical and eco-Garden, a Community Garden, Animal Rehabilitation Center, a Biodiversity Center, a Herbarium, Molecular and Cytogenetic Laboratories, Biodiversity Library, Mobile Educational Unit, and more. Learn more about us by visiting our website (palestinenature.org). Visit our YouTube Channel (<https://www.youtube.com/@PIBS-BU-2017>). Here are a couple of videos <https://youtu.be/E8h2xCe2mK0> and <https://youtu.be/AZOoOzXU7tQ>

This year we celebrate our 10th anniversary. The achievements were remarkable. Please take seven minutes to see this video <https://youtu.be/qt8OTGoS198> and this booklet that beautifully illustrates what we do <https://www.palestinenature.org/annual-reports/10-Years-PIBS-Final.pdf>



In brief, PIBS (with volunteer and donor support)

- Published **128 research papers** in **peer reviewed journals** in many areas: fauna, flora, conservation measures, environmental injustice, sustainable agriculture, climate change, protected areas, and human rights.

- Published **220 other articles** of a more lay person nature in magazines, journals, and key information websites
- **Enhanced awareness** of tens of thousands of visitors through visits to our **Natural History and Ethnography Exhibits** and the **Botanical Garden**.
- Produced various educational modules such as **interactive games** tailored to the Palestinian community, **brochures and posters** on environmental topics to distribute to schools, and **animated videos**.
- Established 20 **environmental clubs** at various schools
- Held over 1100 **workshops** half of them local and half from over 40 countries. Also launched a **Mobile Educational Unit (MEU)**, which is the first mobile exhibit of its kind in Palestine. It visited 46 schools, benefitting 6011 students in **marginalized communities** who are unable to visit us.
- Led the efforts for the new **Protected Area Network** and **National Biodiversity Strategy and Action Plan (NBSAP)**.



- Played a major role in development of the Environmental Studies master's program at Birzeit University and a **new Bachelor program** in Technology for Environmental Sustainability at Bethlehem University.. PIBS team also supervised many bachelor and master **thesis projects** both locally and even internationally (especially interns from Germany) in diverse subjects.
- Provided leadership and acted as a **model for national, regional, and global actors** in areas like **environmental justice** and **challenging settler colonialism** vis a vis the environment ● Set up a successful **animal rehabilitation unit**.
- Engaged in **community service activities** that benefited >650 families.

Going Forward:

These achievements and dozens of others found on our website allow us to dream bigger. We will accelerate our research activities, conduct important consultancies to shape national and global actions for conservation, expand our exhibit space from the current 100 sq meters to 1100 square meters with the new building (see <https://youtu.be/ZuNwdk5-6N0>) and fit the space with the most modern interactive exhibits on everything from ethnography to natural history to Palestinian history). We will also expand our conservation and community service projects to benefit nature and people. This includes restoration and rehabilitation of habitats, tree planting, and service to marginalized communities (women, children, Bedouins, those in area C, farmers).

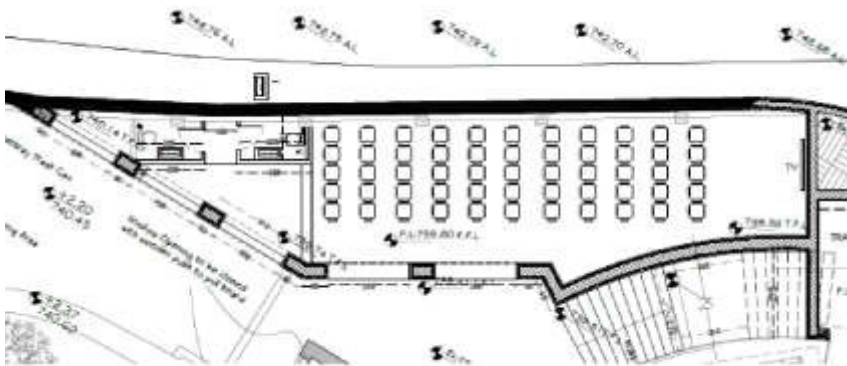


Specific needs

We welcome your partnerships to advance our work that is critical to advancing sustainability for both humans and natural communities in Palestine and beyond. Please visit <http://palestinenature.org> to partner with us or email us at info@palestinenature.org or call us 970-22773553.

These amazing achievements were done with very limited funds. We raised \$2 million in unrestricted funds and \$3.2 in restricted funds (grants including from places like the EU, National Geographic Society, Darwin Initiative, British Council, Royal Society, etc.). 70% of these funds were for infrastructure development (buildings, exhibits, gardens, vehicles, etc.). When the rest is divided over activities and projects that meant little is left for operations. Our operational budget fluctuated from \$50-72,000 annually. That is why we depend in half our productivity on volunteers (including founders Prof. and Mrs Qumsiyeh). **Thus, we welcome you to volunteer (<http://palestinenature.org/volunteer>) or donate in kind (books, specimens, tools, material etc) or donate money. For the latter, any gift of any size is welcome and \$20 donations from many people are appreciated as are larger donations. These ten items await your kind donation (talk to us about naming issues for larger donations):**

ITEM 1: We now have under the bus parking lot a space that is yet to be completed and furnished that would become a visitor lecture room. Here is the design and we estimate cost is \$40,000 to do it



ITEM 2: Elevator: The elevator shaft was constructed as were the openings to the different levels. The elevator is complicated because as you see from the picture it needs to open at half levels because of the original structure of the building with staggered levels (see figure below, white is new construction). It is estimated to cost \$55,000.



ITEM 3: Handicap lift between reception area and cafeteria level. This lift is needed per architectural plans and to be compliant with handicap access. \$18,500

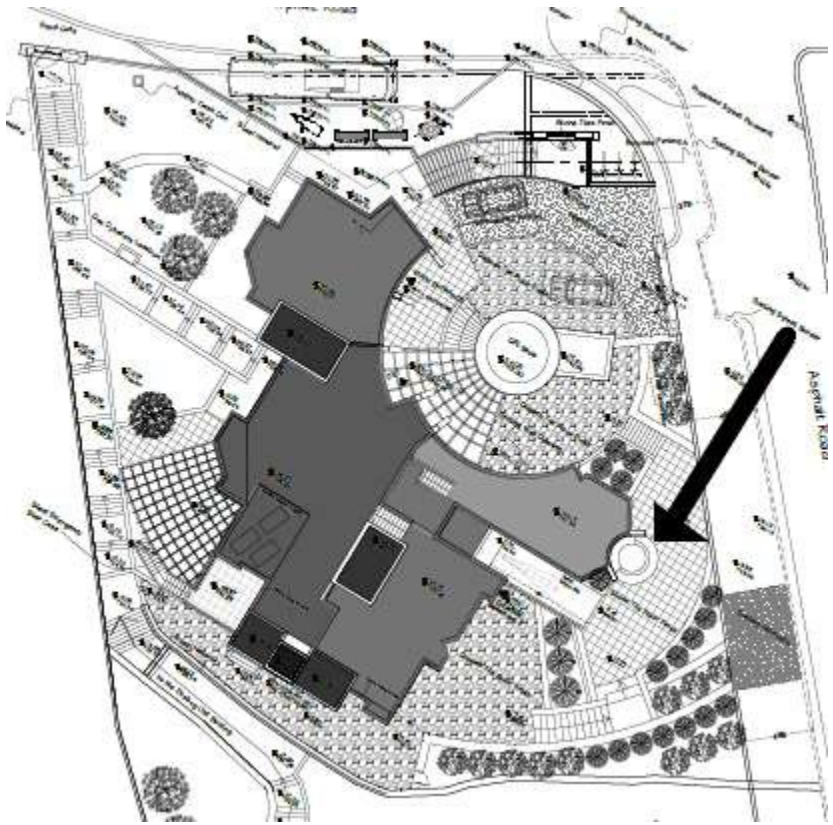


ITEM 4: Outdoor children play area (just outside the children room - see item 5). This includes slides, swings, seesaw. Ground cover also needed to ensure safety. Some will be from recycled material like tires. Est \$4000

ITEM 5: Designing and Furnishing children room: See the architectural design for this room below which will be completed structurally in February/March 2025. But we can start purchasing furniture and items to put in the room. We estimate \$12.000 cost (including large screen TVs, design etc).



IEM 6: Furnishing Landscape stone and benches (see figure below) will cost some \$9000. Landscaping and making the fountain (shown by arrow in architect design below) and the surrounding yard of the fountain will cost \$18,000.



ITEM 8: Two statues (Ibex and Hyrax) made and installed at the street entrance of the Natural History Museum



ITEM 8: Solar energy photovoltaic system: \$28500

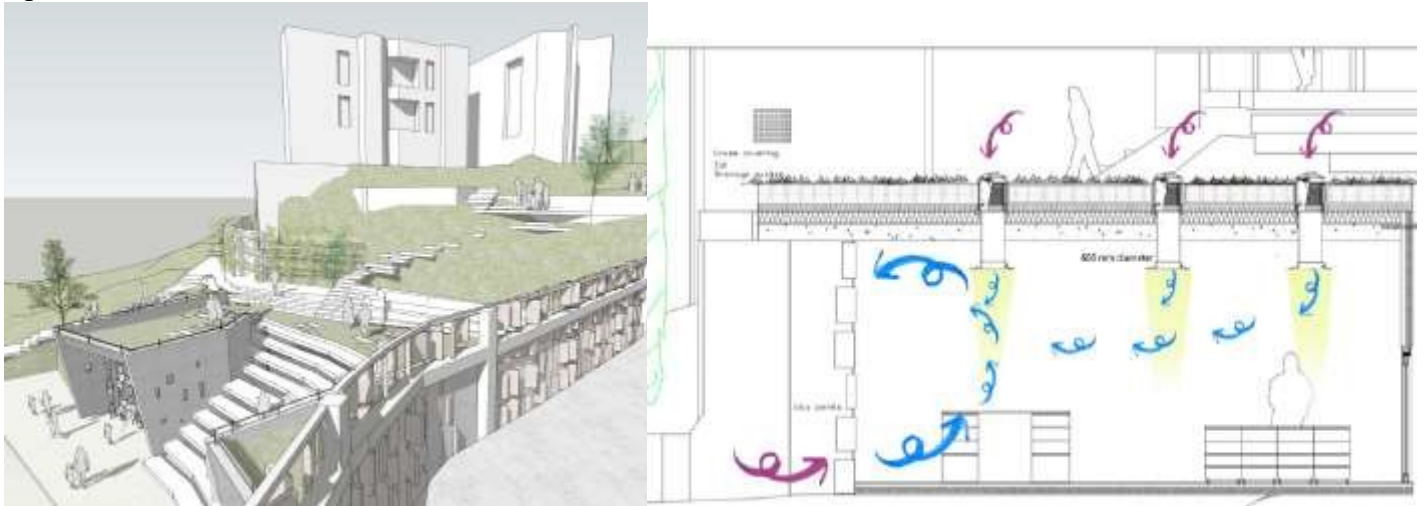
ITEM 9: (Required by civil defense): Free Pump (UR listed) and StandBy Electric Generator. Total \$76,000

ITEM 10: cafeteria furnishings including kitchen. \$40,000 (achitect design with tables below)



ITEM 11: To ensure sustainability, we will need to create an endowment fund. The Qumsiyeh's already pledge to match donations towards that up to \$250,000

ITEM 12: This project slated for 2026-2029 will allow us to receive tens of thousands more visitors and expand to a stage 3! Figure below shows design of underground exhibits underneath buildings being renovated and expanded.



Donate: <http://palestinature.org/donations>

Contact: Prof. Mazin Qumsiyeh info@palestinature.org whatsapp +972 598939532